





# SWEET LADY JANE


GOURMET GROCERY

13850 DEL SUR STREET  
SAN FERNANDO, CA 91340

[wholesale@sweetladyjane.com](mailto:wholesale@sweetladyjane.com)  
[www.sweetladyjane.com](http://www.sweetladyjane.com)

 [@sweetladyjanebakerycafe](https://www.instagram.com/sweetladyjanebakerycafe)

 [@sljbakery](https://twitter.com/sljbakery)



Jane found store-bought desserts “too sweet” and “too commercial.” When Jane and her husband Donald started dating, he often cooked dinner while she would experiment with some simple desserts. Jane realized early on that when the freshest ingredients were used, desserts could be moist, not overly sweet, and indeed wonderful!

With support from family and friends Jane began baking out of her house, selling her delicious desserts to Los Angeles restaurants. Her reputation for quality and taste grew and on May 5, 1988 the first Sweet Lady Jane bakery opened its doors!

After over 20 years of success at the original flagship Melrose location in West Hollywood, Sweet Lady Jane started its expansion opening two new locations in Santa Monica and Encino.

As our popularity continued to grow we created our gourmet grocery wholesale brand where our most popular items can be found in retailers nationwide! Currently offered in over 1,000 grocery stores in over 24 states, we've brought our deliciously delectable sweets to you! We have a commitment to uncompromising quality and taste. It is what guides everything we do. Enjoy one of our delicious treats and experience desserts Jane's way!

# SWEET LADY JANE AT A GLANCE



**Three retail locations in Southern California -  
Flagship location opened May 5th, 1988 -  
Balanced full-scale bakery and cafe offerings -  
Elegant and beautiful wedding and custom cake business -**

Retail

**Prestigious partnership with leading brands including:  
Neiman Marcus -  
Harry & David -  
Amazon -  
O Magazine (Oprah Magazine) -  
Uber Eats -  
Postmates -  
ChowNow -  
DoorDash -  
Virgin America -  
Bloomingdales -**

Partnerships

**Online launched in November 2014 -  
75% of sales outside of CA -  
Named Oprah's Favorite Things in 2014, 2015 and 2016 -  
Ships nationwide overnight -**

Online

**"Sweet Lady Jane Gourmet Grocery" launched in 2008 -  
All natural, no preservatives and zero trans fat ingredients -  
Supplied to over 1,000 grocery stores in 24 states -  
Supplied to numerous high end restaurants in the SoCal area -  
Featured offering on first class airlines -  
Brand value extends nationally -**

Wholesale

# AWARDS & ACCOLADES



Sweet Lady Jane has been named “Oprah’s Favorite Thing” for three years in a row (2014, 2015 and 2016). Showcased on the cover page and admired by Oprah herself calling the deep dish Cherry Pie “very merry, soon-to-be legendary, dare we say necessary, simply extraordinary.”



**BEST OF LA 2011**  
Los Angeles

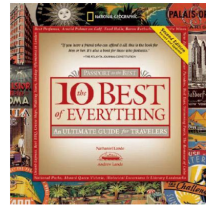
“BEST APPLE PIE”

Other accolades include the “BEST APPLE PIE” by Los Angeles Magazine in 2011. “Among desserts, apple pie is the epitome of comfort...we couldn't resist the balanced flavor of the 10 inch deep dish confection from Sweet Lady Jane. Officially it serves, 10-12; we'd say 20 is more like it. The fruit is touched with cinnamon and encased in a thick double crust that tastes more homey than haughty.”

Winning National Geographic's #1 Patisserie in the world (multiple years and counting) is always a coveted and wonderful award. Quoted in their monthst recent edition of the *10 Best of Everything* publication “This upscale bakery makes some of the best lemon meringue tarts, flourless chocolate cake and cheesebread in the country. The decorated cakes are both visually and culinary masterpieces. Grab a seat and enjoy a croissant and coffee, a sandwich, or a scone with a cup of tea.”

**NATIONAL GEOGRAPHIC**

The 10 Best of Everything



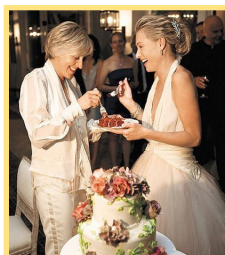
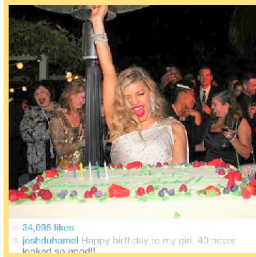
Los Angeles Times  
**READERS' CHOICE**  
Best of Southern California 2011

When Sweet Lady Jane learned we were the Los Angeles Times Readers Choice for Best Dessert Shop in 2011, we were filled with gratitude, because we knew our loyal customers and local fans had made the choice and for them, it was special. “It's all here for the cultured sweet tooth: heavenly red velvet cake, creamy tiramisu, berry laden English trifle and pies made with more than eight cups of real fruit. Sweet Lady Jane is charmingly old school and hands-on: breaking their own eggs, rolling their own pastry and squeezing their own lemons, all while shunning preservatives and mixes.”

# MEDIA



Whether it's a bridal shower, wedding, baby shower, birthday or any of life's special moments, we love sharing our edible creations with our customers and fans! One can find our work amongst the most impressive publications in the media industry including People Magazine, Oprah's "O" Magazine, InStyle Magazine, HELLO! Magazine, Newsweek Magazine, USWeekly Magazine, Los Angeles Magazine, National Geographic Magazine, Country Home Magazine, Star Magazine, InTouch Magazine, the Los Angeles Times Lifestyle Edition, the Sydney Herald, the New York Daily News, Bon Appetit Magazine and W Magazine. We love seeing our creations on the tables of everyone including some of Hollywood's most famous!



Left to Right Top to Bottom: Emmy Rossum & Monique Lhuillier, Fergie, Heidi Klum, Caitlin Jenner, Taylor Swift & Gigi Hadid, Kendall Jenner, Sofia Vergara, Ellen Degeneres & Portia de Rossi, Vanessa Hudgens

# BARS & BROWNIES



## SEA SALT BROWNIES

Sea Salt complements the decadent dark chocolate.

- 8 units per case / 16 x 1" pieces per unit
- Weight: 12oz (340g)
- Delivered frozen (frozen life 9 months)
- Sold shelf stable / ambient
- Shelf Life: Ambient 10 days



## LEMON BARS

A butter shortbread crust is baked with a lemon curd filling.

- 12 units per case / 6 x 2" pieces per unit
- Weight: 12oz (340g)
- Delivered frozen (frozen life 9 months)
- Sold shelf stable/ ambient
- Shelf Life: Ambient 10 days



## DATE BARS

Oatmeal, brown sugar and butter layered with a date filling.

- 8 units per case / 4 x 2" pieces per unit
- Weight: 12oz (340g)
- Delivered frozen (frozen life 9 months)
- Sold shelf stable / ambient
- Shelf Life: Ambient 10 days



## RASPBERRY BARS

Oatmeal, brown sugar and butter layered with raspberry filling.

- 8 units per case/ 4 x 2" pieces per unit
- Weight: 9oz (255g)
- Delivered frozen (frozen life 9 months)
- Sold shelf stable / ambient
- Shelf Life: Ambient 10 days



## LEMON RASPBERRY BARS

A butter shortbread baked with lemon juice filling and fresh raspberries and topped with powdered sugar.

- 12 units per case / 6 x 2" pieces per unit
- Weight: 12oz (340g)
- Delivered frozen (frozen life 9 months)
- Sold shelf stable / ambient
- Shelf Life: Ambient 10 days



## ALMOND COCONUT CHOCOLATE BARS

A rich caramel filling with almonds, coconut and belgian dark chocolate covering a butter shortbread

- 12 units per case // 6 x 2" pieces per unit
- Weight: 9oz (255g)
- Delivered frozen (frozen life 9 months)
- Sold shelf stable ambient
- Shelf Life: Ambient 10 days

· Also available in 1/4 Sheet Trays cut 2" x 2" or uncut



# TARTS



## ALMOND COCONUT TART

The perfect combination of almonds, caramel, coconut and chocolate.

- 8 units per case
- 8" Round Tart · Weight: 16oz (454g)
- Delivered frozen (frozen life 9 months)
- Sold shelf stable / ambient
- Serve at room temperature
- Shelf Life: Ambient 7 days



## APPLE CRANBERRY PLUM TART

Our delicious combination of apples, cranberries and plums are baked together and topped with a buttery streusel.

- 6 units per case
- 8" Round Tart · Weight: 24oz (680g)
- Delivered frozen (frozen life 9 months)
- Sold shelf stable / ambient
- Shelf Life: Ambient 4 days
- Serving / Reheating: Serve at room temp. If desired, reheat in conventional oven 300° or convection oven 250° for 10 minutes



## CHERRY ALMOND TART

Our sour cherries are combined with sliced almonds and cream to fill a sweet pastry.

- 8 units per case
- 8" Round Tart · Weight: 20oz (567g)
- Delivered frozen (frozen life 9 months)
- Sold shelf stable / ambient
- Shelf Life: Ambient 4 days
- Serving / Reheating: Serve at room temp. If desired, reheat in conventional oven 300° or convection oven 250° for 10 minutes



## LEMON BLUEBERRY TART

Our tart, lemon filling is baked with sweet blueberries and wrapped in our delicate butter pastry.

- 8 units per case
- 8" Round Tart · Weight: 14oz (397g)
- Delivered frozen (frozen life 9 months)
- Sold shelf stable / ambient
- Serve at room temperature
- Shelf Life: Ambient 4 days



# CHEESECAKES



## NEW YORK CHEESECAKE

An old fashioned New York style cheesecake with a touch of lemon and orange added. It is enveloped in an all butter crust.



- 9" Round Cake · Weight: 72oz (2041g) · 2 units per case
- Delivered frozen (frozen life 9 months)
- Each cake is collared, shrink wrapped and pre-sliced with wax-paper between 10 individual pieces
- Shelf Life in Refrigerated Case 5 days
- Serve at room temperature

## CHOCOLATE TOPPED NEW YORK CHEESECAKE

An old fashioned New York style cheesecake with a touch of lemon and orange added. It is enveloped in an all butter crust and topped with dark chocolate ganache.



- 9" Round Cake · Weight: 72oz (2041g) · 2 units per case
- Delivered frozen (frozen life 9 months)
- Each cake is collared, shrink wrapped and pre-sliced with wax-paper between 10 individual pieces
- Shelf Life in Refrigerated Case 5 days
- Serve at room temperature

## RASPBERRY WHITE CHOCOLATE CHEESECAKE

This rich cheesecake is made with raspberries and topped with a white chocolate ganache.



- 9" Round Cake · Weight: 72oz (2041g) · 2 units per case
- Delivered frozen (frozen life 9 months)
- Each cake is collared, shrink wrapped and pre-sliced with wax-paper between 10 individual pieces
- Shelf Life in Refrigerated Case 5 days
- Serve at room temperature

## CHOCOLATE VANILLA SWIRL CHEESECAKE

Our melted Belgian chocolate is swirled into our rich classic vanilla cheesecake and poured over a dark cookie crust.



- 9" Round Cake · Weight: 72oz (2041g) · 2 units per case
- Delivered frozen (frozen life 9 months)
- Each cake is collared, shrink wrapped and pre-sliced with wax-paper between 10 individual pieces
- Shelf Life in Refrigerated Case 5 days
- Serve at room temperature



# MOLTEN LAVA CAKES



## CHOCOLATE MOLTEN LAVA CAKE

Our flourless chocolate cake is made with imported semi-sweet dark chocolate and butter with a rich chocolate center.

- 3.5" Individual Round Cake
- Weight; 6oz each
- 36 units per case
- Delivered and sold frozen (frozen life 9 months)

· Heating Instructions - peel off wax paper while cake is frozen, place on plate, microwave for approximately 30 seconds or when bottom of plate is warm to the touch.

- Serve with whipped cream or vanilla ice cream



## CHOCOLATE RASPBERRY MOLTEN LAVA CAKE

Our flourless chocolate cake is made with imported semi-sweet dark chocolate and butter with a rich raspberry center.

- 3.5" Individual Round Cake
- Weight; 6oz each
- 36 units per case
- Delivered and sold frozen (frozen life 9 months)

· Heating Instructions - peel off wax paper while cake is frozen, place on plate, microwave for approximately 30 seconds or when bottom of plate is warm to the touch

- Serve with whipped cream or vanilla ice cream



## CHOCOLATE CARAMEL MOLTEN LAVA CAKE

Our flourless chocolate cake is made with imported semi-sweet dark chocolate and butter with a rich caramel center.

- 3.5" Individual Round Cake
- Weight; 6oz each
- 36 units per case
- Delivered and sold frozen (frozen life 9 months)

· Heating Instructions - peel off wax paper while cake is frozen, place on plate, microwave for approximately 30 seconds or when bottom of plate is warm to the touch.

- Serve with whipped cream or vanilla ice cream



